


## SmartCare Damp Block

Asian Paints SmartCare Damp Block is a polymer modified, flexible cementitious waterproof coating. It is a single pack high performance cementitious product formulated with elastic waterproofing polymers, nano technology based additives and crystalline technology.



 WATER BASED

 **asianpaints**

**LEAD FREE\* GUARANTEE** 

\* All Asian Paints products contain no added Lead, Mercury, Arsenic or Chromium from April 2008.

### PRODUCT BENEFITS

**Water Proofing**

Resists 4 bars negative hydrostatic pressure.

**Crystalline & Nano Technology**

Forms insoluble crystals inside plaster to block the water pathways. Contains nano sized particles to block the pores.

**Flexibility**

Able to accommodate minor plaster movements.

**Adhesion**

Excellent bond strength with cementitious substrates.

**Water Vapour Breathability**

Breathable enough to allow water vapour to pass while blocking liquid water, thus preventing vapour pressure build up,

**Usage**

Single pack and easy to apply.

### PRODUCT FEATURES

#### AVAILABLE PACKS



Shelf life: 1 year from date of manufacture in original tightly closed containers away from direct sunlight and excessive heat.

#### COLOURS AVAILABLE

**Off White**



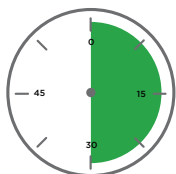
#### COVERAGE

On sound plaster using trowel



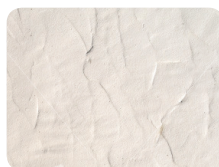
**7.5**  
sq.ft/kg

#### DRYING TIME TO TOUCH



**4-6**  
HOURS

#### RECOMMENDED USAGE



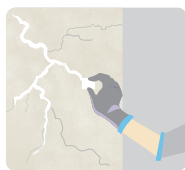
Can be used for damp interior walls adjacent to bathroom, kitchen and exteriors, walls affected by ground rising dampness and walls affected by efflorescence

### HOW TO APPLY

#### PRE PAINTING STEPS



**CLEANING** Surface should be free from any loose paint, dust or grease. Remove old paint, putty or existing POP using chisel, wire brush. Ensure you reach the cement plaster before product application.



**REPAIRING** Re-plaster if existing plaster is in very poor condition. Repair the concerned area to stop the source of dampness.



**FILLING FOR CRACKS** For filling cracks upto 3mm use suitable compound.

#### APPLICATION PROCESS

APPLICATION

THINNER

DILUTION %

APPLICATION VISCOSITY\*

RECOATING PERIOD

STEP 1  
SELF PRIMING  
SMARTCARE DAMP BLOCK  
BRUSH

 WATER

100%

N/A

4 - 6 HRS

STEP 2  
FIRST COAT SMARTCARE  
DAMP BLOCK  
PUTTY KNIFE / TROWEL

 WATER

33%

N/A

4 - 6 HRS

STEP 3  
SECOND COAT SMARTCARE  
DAMP BLOCK  
PUTTY KNIFE / TROWEL

 WATER

33%

N/A

4 - 6 HRS

STEP 4  
LEVELING

LEVEL THE WALL USING APCO WALL PUTTY

STEP 5  
PRIMER AND TOP COAT

CONTINUE NORMAL PAINTING USING PRIMER AND TOPCOAT

1. Apply Damp Block at least 2 feet beyond in all directions from the affected area.  
2. Apply an additional coat of Damp Block in case of severe dampness.  
3. For best results, strictly follow the dilution and forced coverage requirements.

## ADDITIONAL INFORMATION

### POST PAINTING CARE

For the best performance of the paint, ensure proper washing and cleaning of all algal and fungal growth, if any, at regular intervals of six months.

### TECHNICAL DETAILS

**a. Form:** Single pack powder

**b. Mix Density:** 1.57

**c. Open time:** Up to 2 hours

**d. Application temperature:** 5°C (being cement based, curing will prolong at lower temperature)

**e. Cleaning tools:** With water immediately after use

### PRECAUTIONS

- › Apply only on cementitious plaster and not on POP, putty or existing paint.
- › Not designed for application on ceiling affected due to seepage from toilets upstairs. It is recommended to go to the source and apply the product in the sunken areas.
- › Always add powder to water, not reverse to ensure the mixture is free of lumps.
- › Mix only enough mixture that can be consumed within 2 hours.
- › For best results, arrest the source of water before applying Damp Block.

### SAFETY FEATURES

- › Kindly refer to the MSDS for Asian Paints SmartCare Damp Block which gives detailed information on safety measures while handling the paint, which is available on request.
- › Store the container with the lid tightly closed in an upright position, in a cool, dry place
- › Keep out of reach of children and away from eatables.
- › May be harmful if swallowed. In case of ingestion seek immediate medical attention.
- › Wear eye protection during application. In case of contact with eyes, rinse immediately with plenty of water and seek medical advice.
- › In case of skin contact immediately wash skin with soap and plenty of water. Get medical attention if irritation develops or persists.
- › Do not breathe vapour or spray. It is recommended to wear suitable nose pad during sanding and surface preparation to avoid dust inhalation
- › Do not pour leftover paint down the drain or in water courses.
- › In the event of spills, contain spillage using sand or earth.
- › No added Lead, Mercury or Chromium compounds.